



## Why should I get involved?

- Help influence decisions to improve Eildon Housing Association's services
- Help ensure you have value for money from your landlord
- Help ensure your landlord hears the voice of tenants
- Learn a new skill!
- Make sure you get the best services possible
- An opportunity to make new friends and improve your knowledge of Social Housing



## Your Committee Members 2010/2011

Ms Maureen Buchan Chairperson	Tweedbank
Mr Brian Lacey Vice-Chairperson	Denholm
Mrs Tracey Alder Secretary	Galashiels
Mr James McPherson Treasurer	Bonchester Bridge
Mrs Peggy Ferguson Committee Member	Peebles
Mr George Buchan Committee Member	Innerleithen
Ms Kathleen Marshall Committee Member	Peebles
Mr Robert McCall Committee Member	Galashiels
Mrs Ann McCall Committee Member	Galashiels

### For more information contact

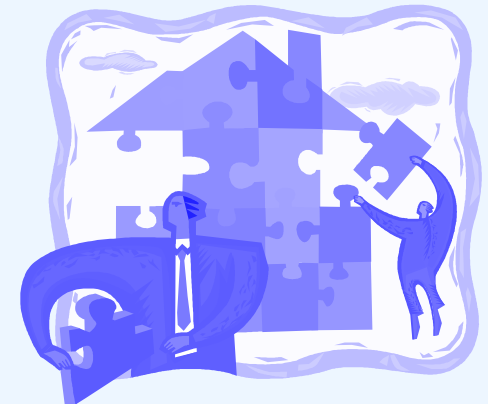
Tracey Alder, Secretary

☎ 01896 751014

✉ [traceyalder@btinternet.com](mailto:traceyalder@btinternet.com)



**The official organisation  
that represents the  
voice of  
Eildon tenants**





## Who or What is E.T.O?

- E.T.O. is the official organisation that represents Eildon's tenants
- E.T.O. aims to safeguard and promote the interests of tenants, residents, sharing owners and future applicants on matters concerning their housing, their environment and their community
- E.T.O. is run for the Eildon tenants by a Committee made up of Eildon tenants



## What does E.T.O. do?

- E.T.O. strives to improve services on behalf of all tenants
- E.T.O. helps to ensure tenants views are put forward to Eildon Housing Association
- E.T.O. provides information and a newsletter written with articles provided by you the tenant
- E.T.O. arranges training for tenants on a wide range of issues
- Conferences and Seminars are attended regularly to keep the
- Committee up to date with matters targeted at Social Housing



## How can I get involved?

- Take part in surveys to give your opinions
- Help to form a focus group in your area.
- Become a tenant Representative for your area.
- Help create ETO's newsletter by providing articles that you feel all tenants would like to see
- Come along to ETO meetings and find out what is new

## Who do I contact?

**Tracey Alder**

ETO Secretary

☎ 01896 751014

[traceyalder@btinternet.com](mailto:traceyalder@btinternet.com)

**Maureen Buchan**

Chairperson

☎ 01896 757634

[maureen.buchan@mypostoffice.co.uk](mailto:maureen.buchan@mypostoffice.co.uk)