



Why should I get involved?

- Help influence decisions to improve Eildon Housing Association's services
- Help ensure you have value for money from your landlord
- Help ensure your landlord hears the voice of tenants
- Learn a new skill!
- Help your community
- Make sure you get the best services possible
- Make new friends and have fun!



Your Committee Members 2009/2010

Ms M Buchan Chair	Tweedbank
Mrs L Landles Vice-Chair	Hawick
Mrs T Alder Secretary	Galashiels
Mrs M Ferguson Treasurer	Peebles
Mrs I Murray	Tweedbank
Mr G Buchan	Innerleithen

CONTACT US!

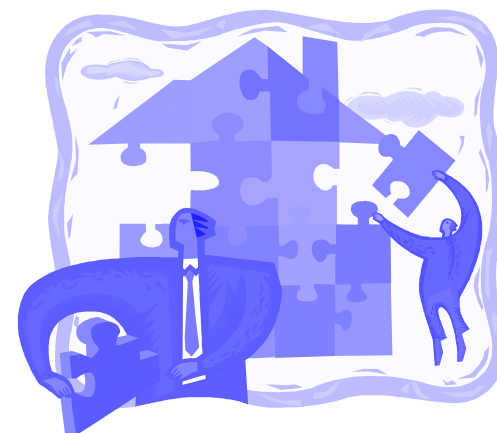
For more information contact

Tracey Alder, Secretary

 **01896 751 014**



The official organisation
that represents the
voice of Eildon tenants





What is E.T.O.?

- E.T.O. is the official organisation that represents Eildon's tenants
- E.T.O. aims to safeguard and promote the interests of tenants, residents, sharing owners and future applicants on matters concerning their housing, the environment and their community
- E.T.O. is run by tenants for tenants



What does E.T.O. do?

- E.T.O. strives to improve services on behalf of all tenants
- E.T.O. helps to ensure tenants views are put forward
- E.T.O. provides regular news, information and a newsletter written by tenants for tenants
- E.T.O. arranges training for tenants on a wide range of issues



How can I get involved?

- Take part in surveys to give your opinions
- Help to form a focus group in your area
- Help create ETO's newsletter
- Come along to your ETO meetings and find out what is new

Who do I contact?

Tracey Alder
E.T.O Secretary
☎ 01896 751014

Pamela Martyn
Tenant Participation Officer
☎ 01750 725900
✉ PamelaM@eildon.org.uk