

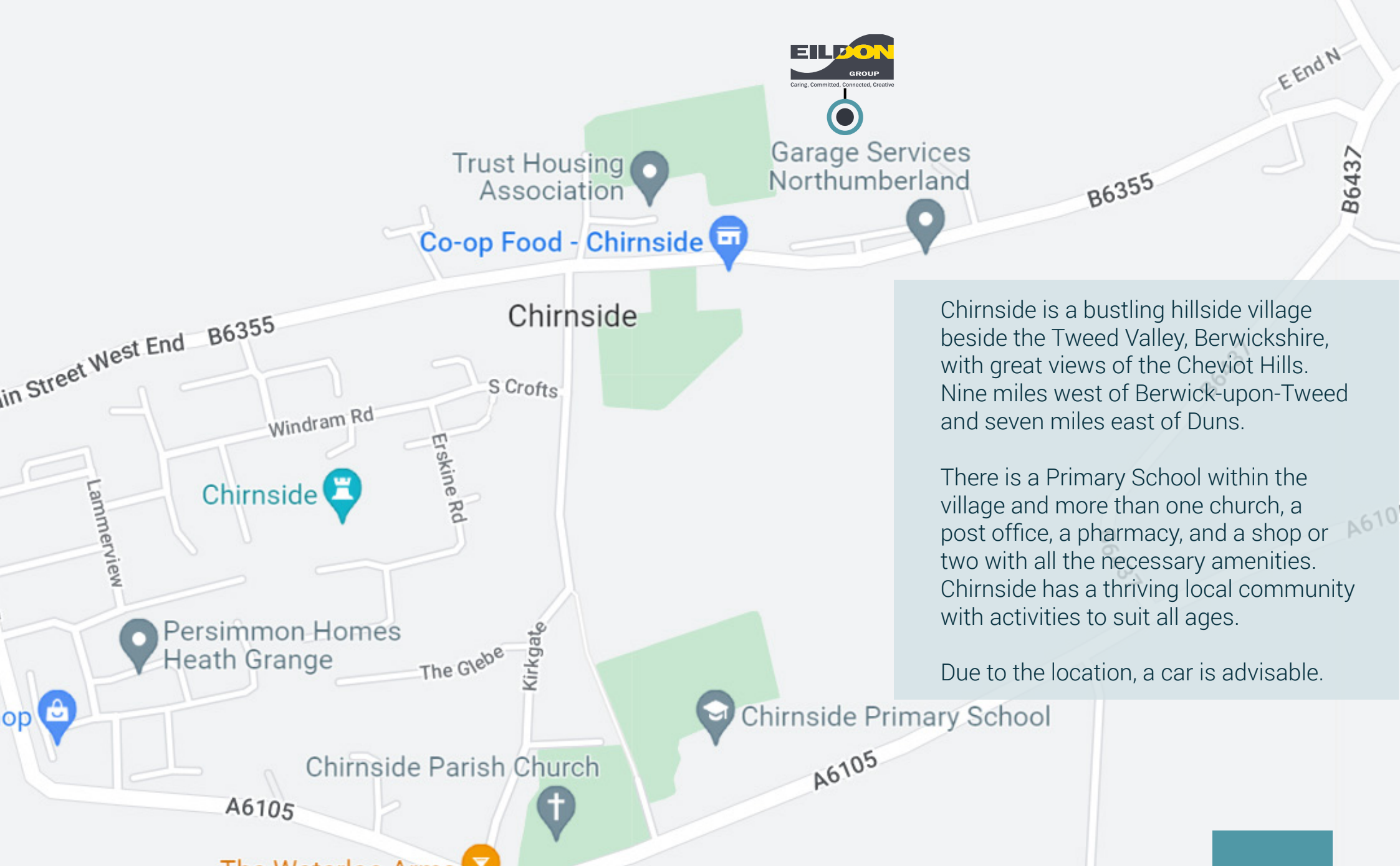
Chirnside

Dominies Way & Dominies Road

EILDON
HOUSING

Caring, Committed, Connected, Creative

Welcome to
Chirnside

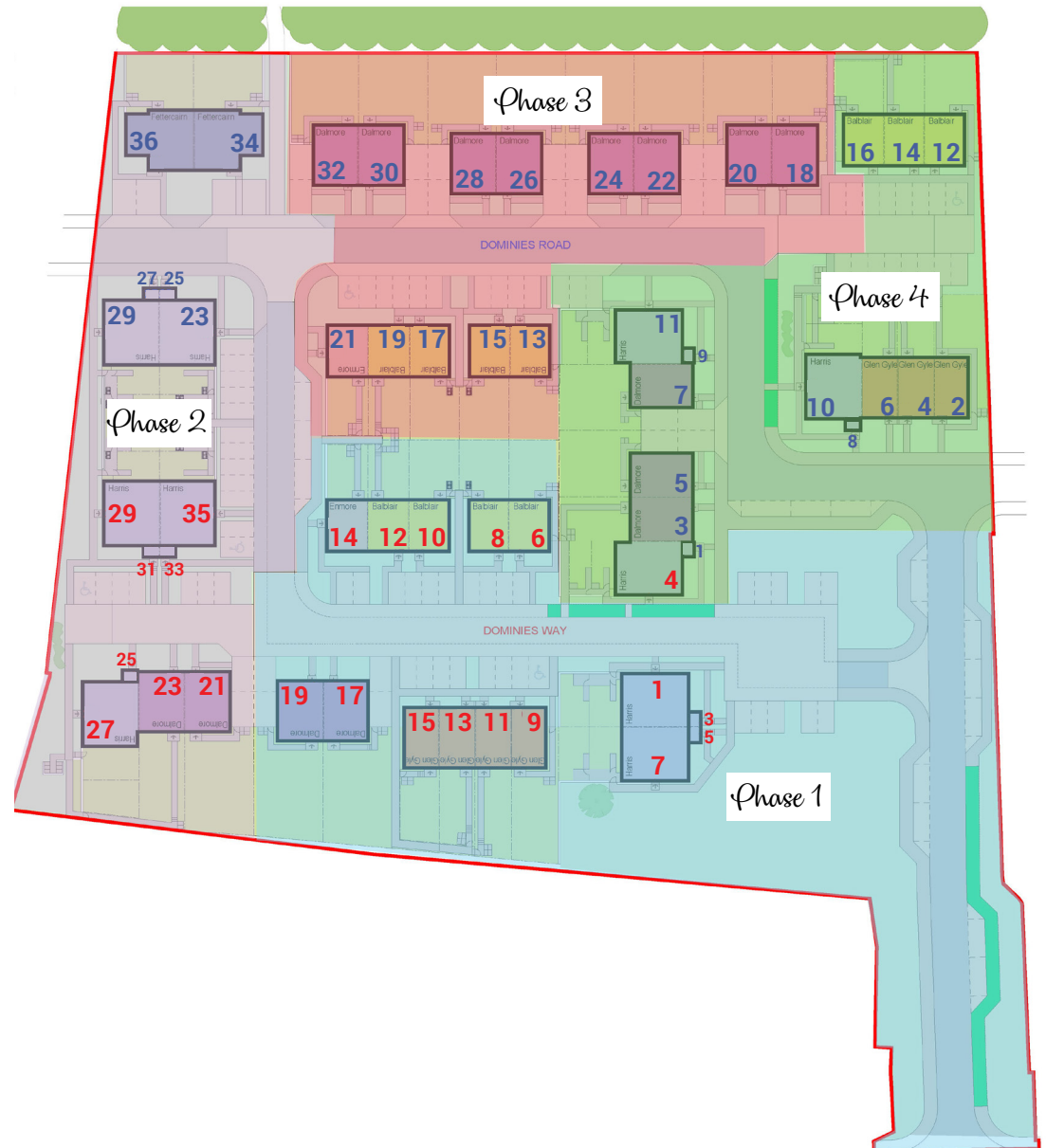


Chirnside is a bustling hillside village beside the Tweed Valley, Berwickshire, with great views of the Cheviot Hills. Nine miles west of Berwick-upon-Tweed and seven miles east of Duns.

There is a Primary School within the village and more than one church, a post office, a pharmacy, and a shop or two with all the necessary amenities. Chirnside has a thriving local community with activities to suit all ages.

Due to the location, a car is advisable.

| Type | No of Properties |
|-------------|------------------|
| Harris | 20 |
| Glen Gyle | 7 |
| Balblair | 11 |
| Enmore | 2 |
| Dalmore | 15 |
| Fettercairn | 2 |



Property Information

- All houses & flats benefit from air-source heating systems and are energy efficiency “B” SAP rating
- All houses have private gardens
- Car parking is a mix of driveways and non-allocated parking.

Please note: the red (Dominies Way) and blue (Dominies Road) numbers within the site plan are the postal addresses.

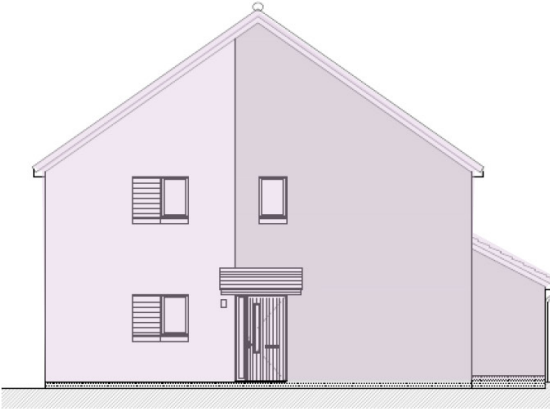
Cottage Flat Harris



Front Elevation

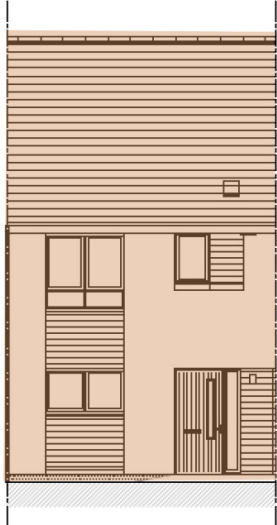


Rear Elevation

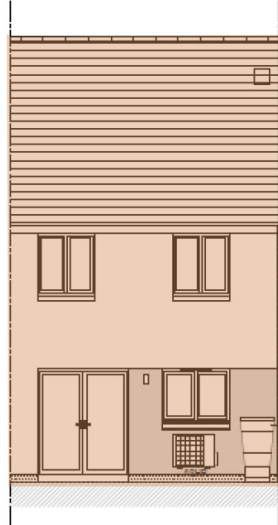


Side Elevation

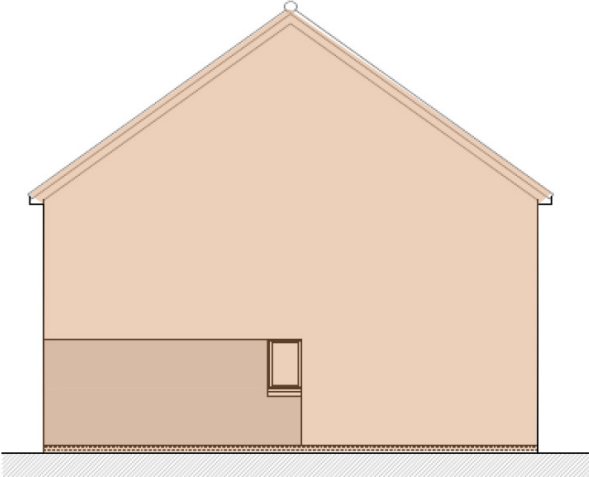
Glen Gyle



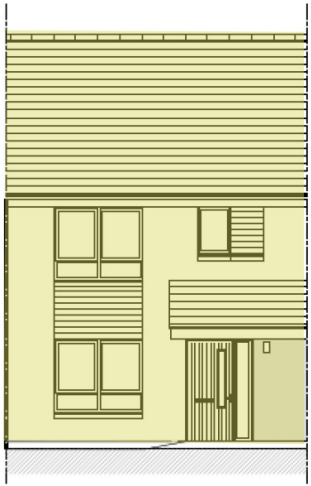
Front Elevation



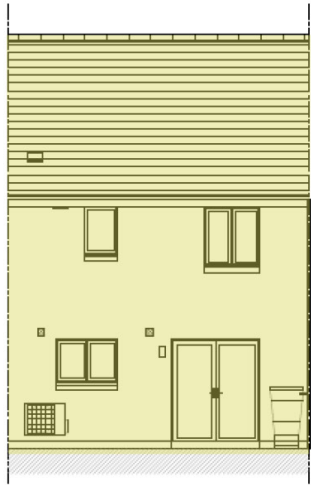
Rear Elevation



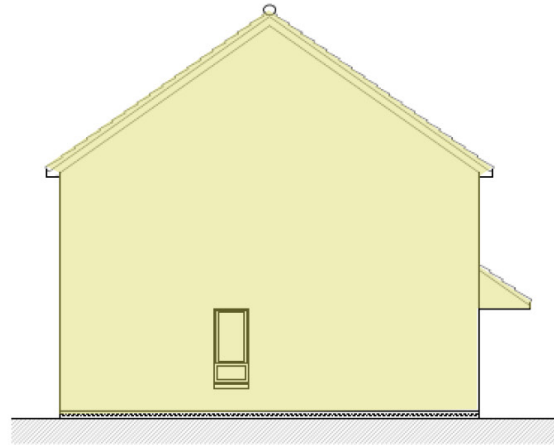
Side Elevation



Front Elevation



Rear Elevation



Side Elevation

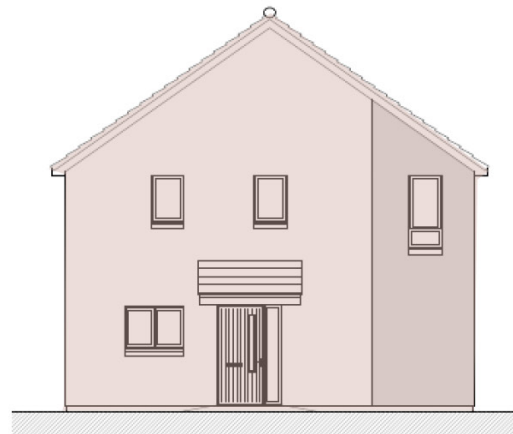
Balblair



Front Elevation



Rear Elevation



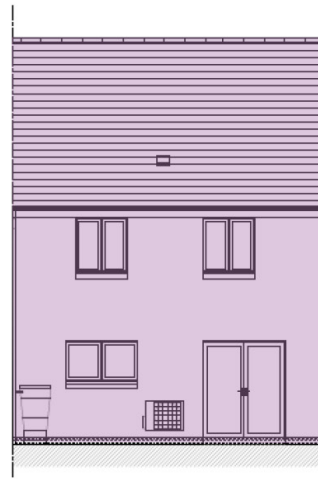
Side Elevation

Enmore

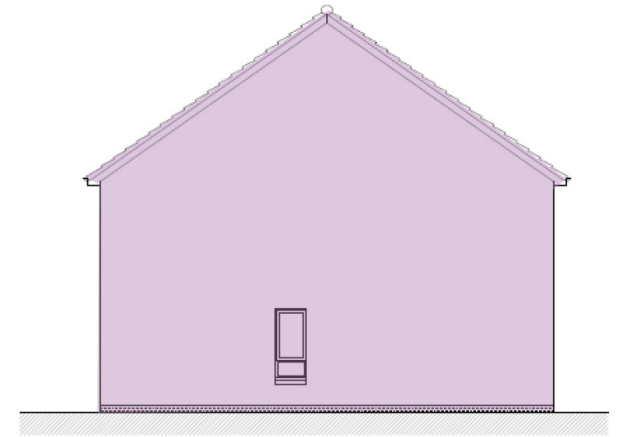
Dalmore



Front Elevation



Rear Elevation



Side Elevation

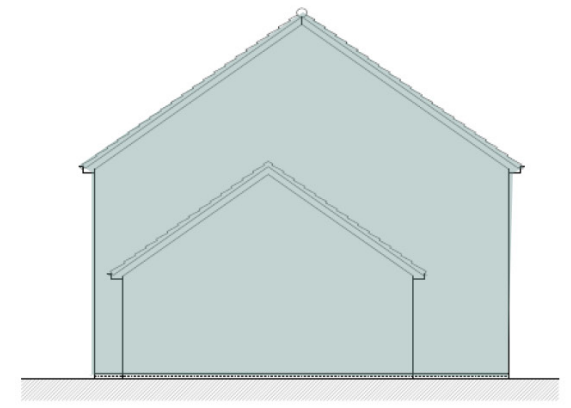
Fettercairn



Front Elevation



Rear Elevation



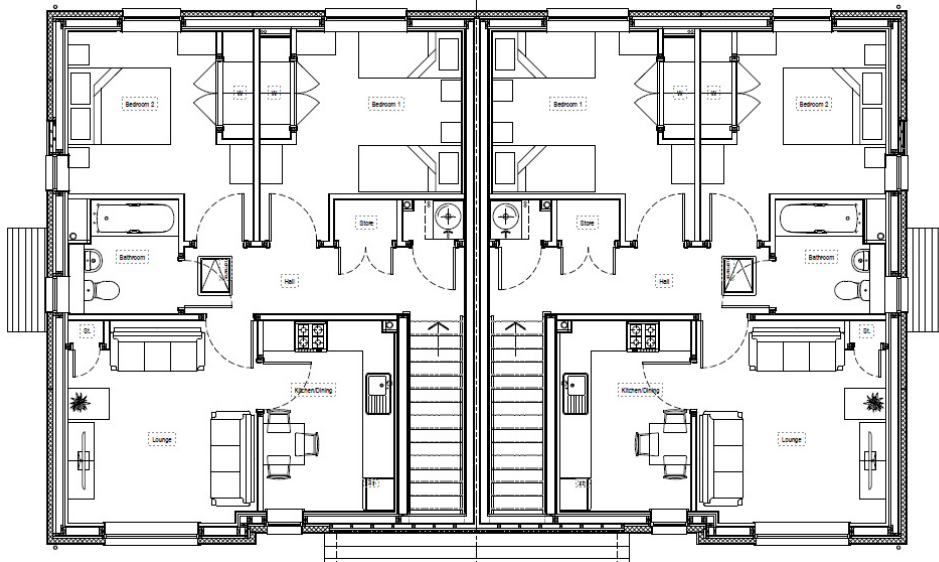
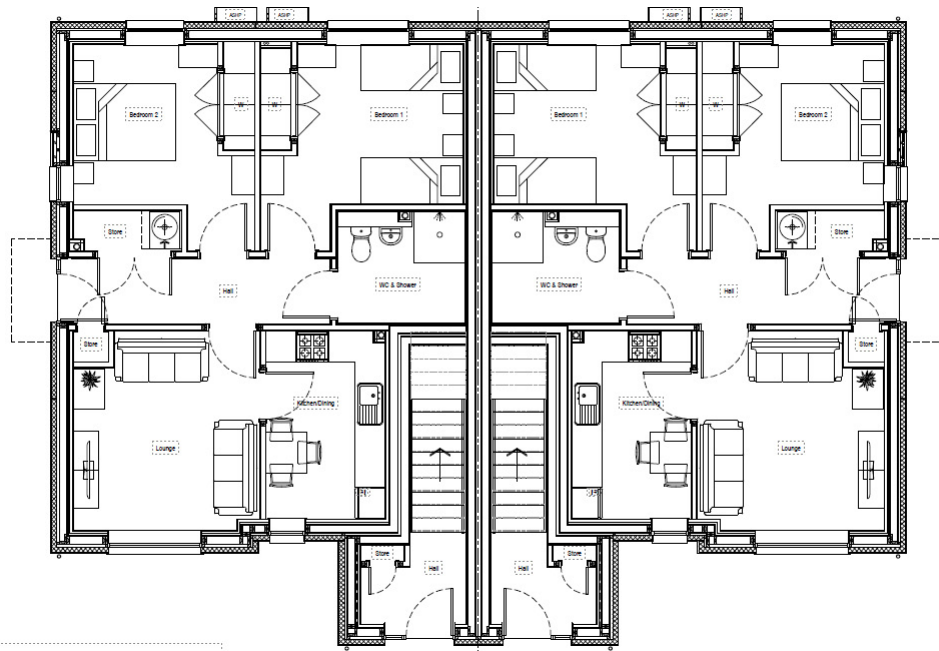
Side Elevation

Cottage Flat Harris

| Ground Floor Flat | | |
|-------------------|---------------|-----------|
| Room | Dimensions | Area |
| Livingroom | 3.65m x 3.89m | 13.54 sqm |
| Kitchen/Dining | 2.33m x 3.67m | 8.55 sqm |
| Bedroom 1 | 3.96m x 4.03m | 12 sqm |
| Bedroom 2 | 3.54m x 4.03m | 10.68 sqm |
| WC & Shower | 2.49m x 2.17m | 5.4 sqm |

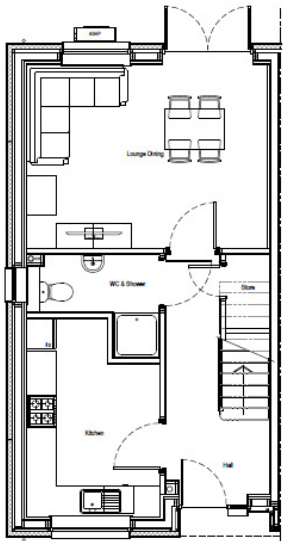
| First Floor Flat | | |
|------------------|---------------|-----------|
| Room | Dimensions | Area |
| Livingroom | 3.67m x 3.93m | 13.9 sqm |
| Kitchen/Dining | 2.53m x 3.71m | 9.4 sqm |
| Bedroom 1 | 3.92m x 4.07m | 12 sqm |
| Bedroom 2 | 3.60m x 4.07m | 10.99 sqm |
| Bathroom | 2.13m x 2.2m | 4.68 sqm |

(Dimensions are approximate and should not be relied upon for ordering carpets or furniture, the above figures indicate the widest point only)

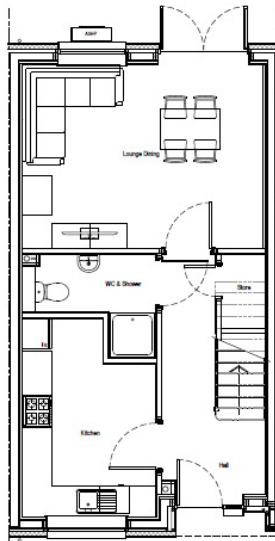


2 bedroom 4 person flat

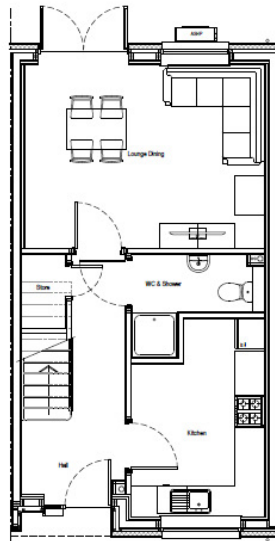
Glen Gyle



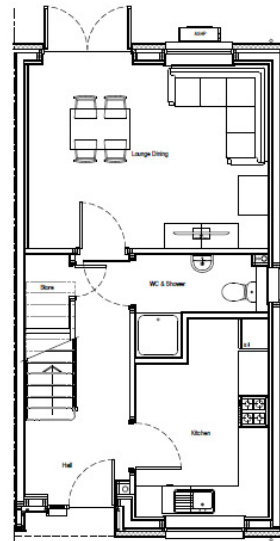
Ground Floor - End (AS)



Ground Floor - Mid (AS)

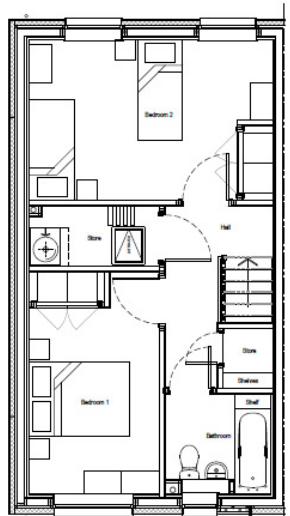


Ground Floor - Mid (OPP)

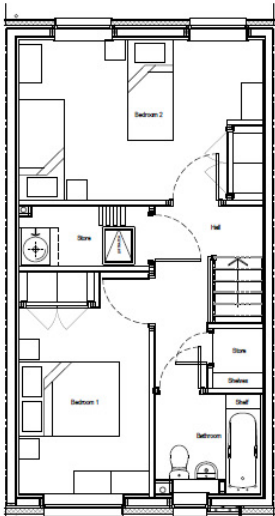


Ground Floor - End (OPP)

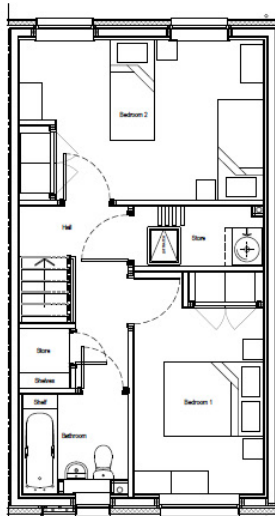
| Ground Floor | | |
|---------------------|---------------|-----------|
| Room | Dimensions | Area |
| Livingroom / Dining | 4.83m x 3.7m | 17.87 sqm |
| Kitchen | 2.68m x 3.98m | 9.7 sqm |
| WC & Shower | 2.67m x 2.08m | 3.93 sqm |



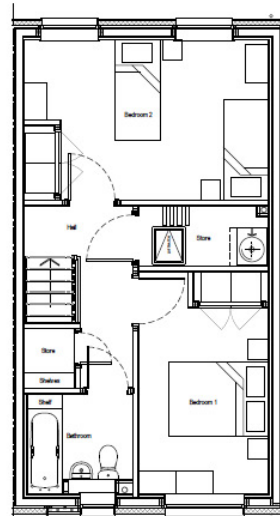
First Floor - End (AS)



First Floor - Mid (AS)



First Floor - Mid (OPP)



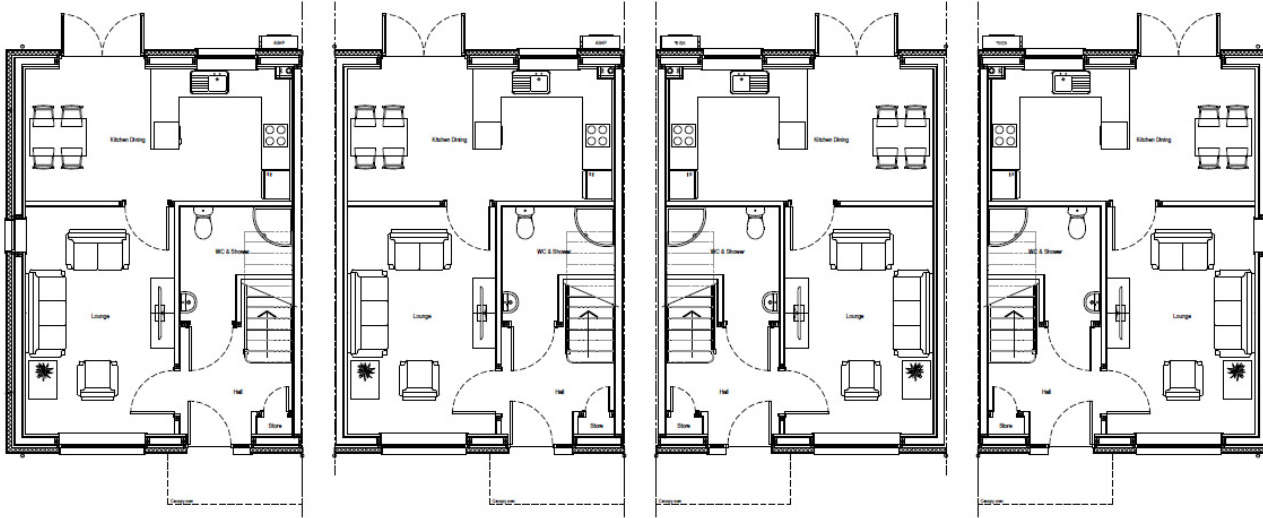
First Floor - End (OPP)

| First Floor | | |
|-------------|---------------|-----------|
| Room | Dimensions | Area |
| Bedroom 1 | 2.6m x 3.73m | 10.41 sqm |
| Bedroom 2 | 4.89m x 3.2m | 14.49 sqm |
| Bathroom | 2.11m x 1.98m | 4.17 sqm |

(Dimensions are approximate and should not be relied upon for ordering carpets or furniture, the above figures indicate the widest point only)

2 bedroom 4 person house

Balblair



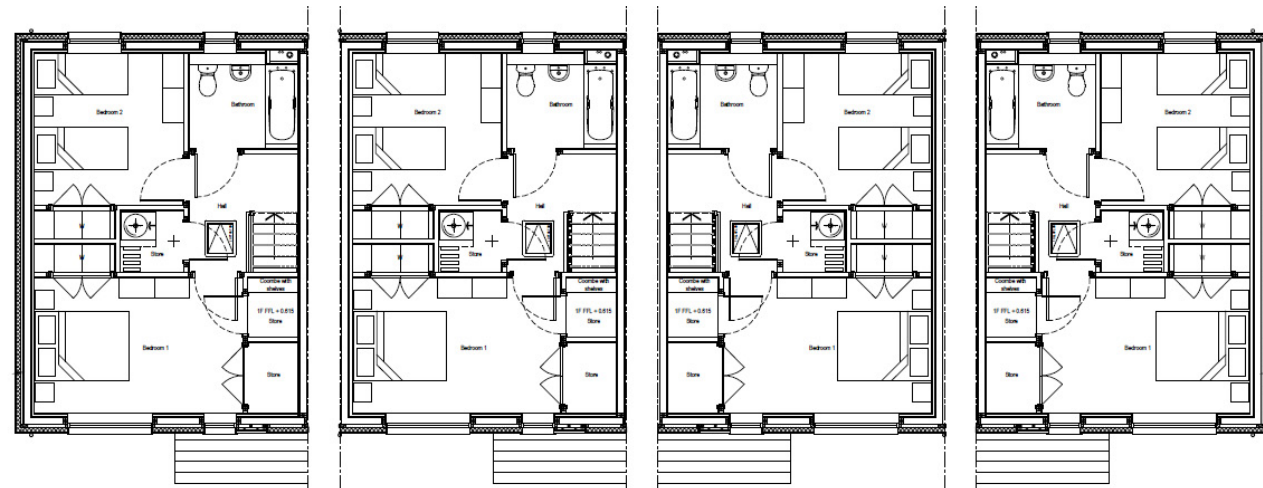
Ground Floor - End (AS)

Ground Floor - Mid (AS)

Ground Floor - Mid (OPP)

Ground Floor - End (OPP)

| Ground Floor | | |
|------------------|---------------|-----------|
| Room | Dimensions | Area |
| Livingroom | 3.15m x 4.82m | 15.18 sqm |
| Kitchen / Dining | 5.6m x 2.8m | 15.68 sqm |
| WC & Shower | 2.38m x 2.42m | 4.58 sqm |



First Floor - End (AS)

First Floor - Mid (AS)

First Floor - Mid (OPP)

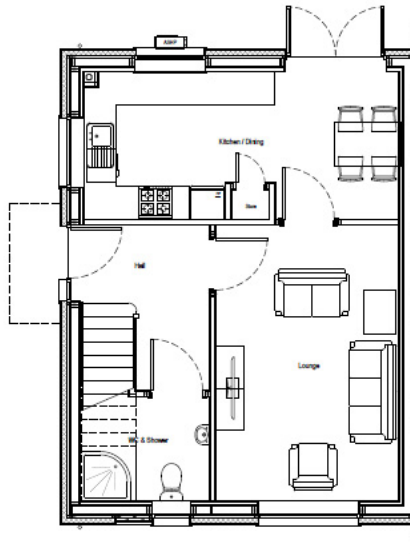
First Floor - End (OPP)

| First Floor | | |
|-------------|---------------|-----------|
| Room | Dimensions | Area |
| Bedroom 1 | 4.47m x 2.92m | 13 sqm |
| Bedroom 2 | 3.2m x 3.26m | 10.43 sqm |
| Bathroom | 2.35m x 2.05m | 4.81 sqm |

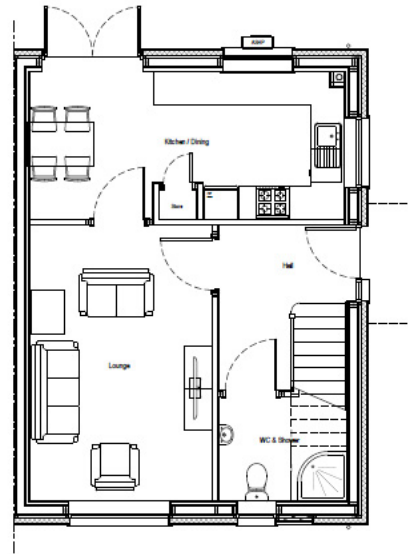
(Dimensions are approximate and should not be relied upon for ordering carpets or furniture, the above figures indicate the widest point only)

2 bedroom 4 person house

Enmore

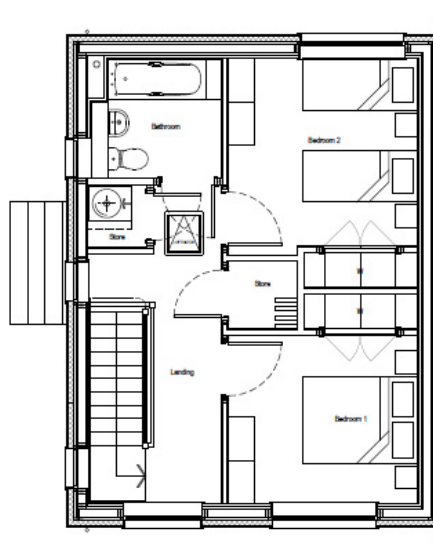


Ground Floor - End (AS)

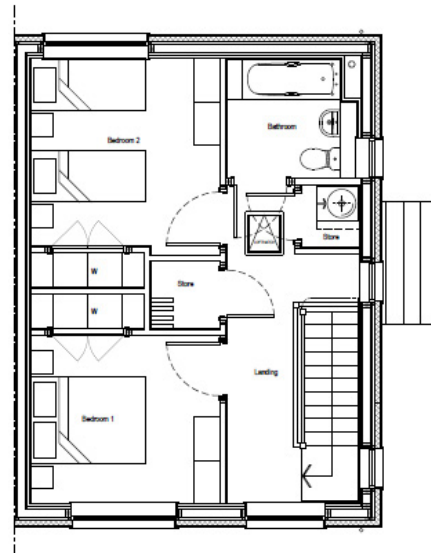


Ground Floor - End (OPP)

| Ground Floor | | |
|------------------|---------------|-----------|
| Room | Dimensions | Area |
| Livingroom | 3.29m x 4.97m | 16.35 sqm |
| Kitchen / Dining | 5.68m x 2.65m | 14.39 sqm |
| WC & Shower | 2.32m x 1.88m | 4.13 sqm |



First Floor - End (AS)



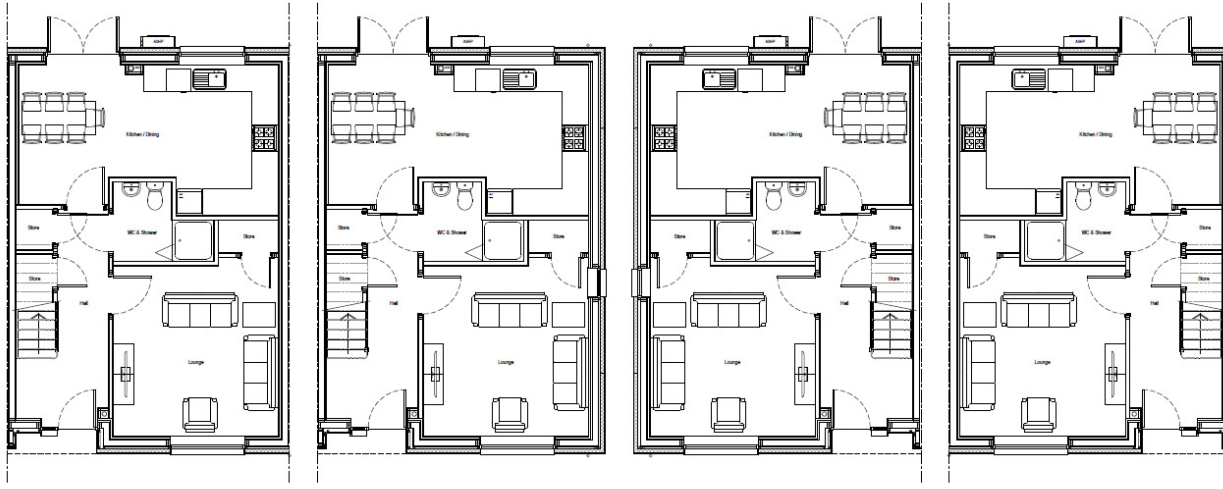
First Floor - End (OPP)

| First Floor | | |
|-------------|---------------|-----------|
| Room | Dimensions | Area |
| Bedroom 1 | 3.29m x 2.92m | 9.6 sqm |
| Bedroom 2 | 3.29m x 3.41m | 10.93 sqm |
| Bathroom | 2.26m x 2.07m | 4.67 sqm |

(Dimensions are approximate and should not be relied upon for ordering carpets or furniture, the above figures indicate the widest point only)

2 bedroom 4 person house

Dalmore



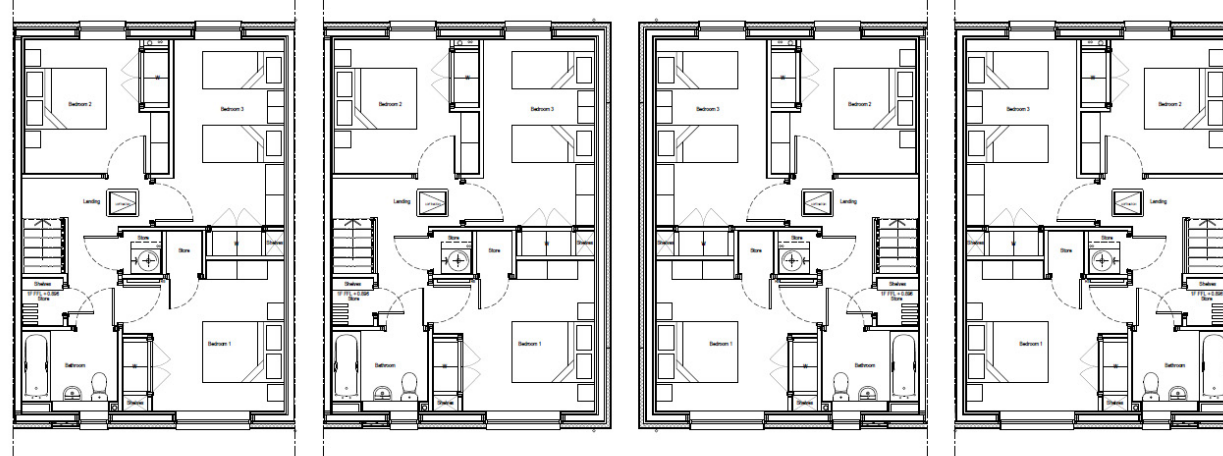
Ground Floor - End & Mid (AS)

Ground Floor - End (AS)

Ground Floor - End (OPP)

Ground Floor - Mid (OPP)

| Ground Floor | | |
|------------------|---------------|-----------|
| Room | Dimensions | Area |
| Livingroom | 4.03m x 4.17m | 17.14 sqm |
| Kitchen / Dining | 6.35m x 3.68m | 21.25 sqm |
| WC & Shower | 2.45m x 1.93m | 3.77 sqm |



First Floor - End & Mid (AS)

First Floor - End (AS)

First Floor - End (OPP)

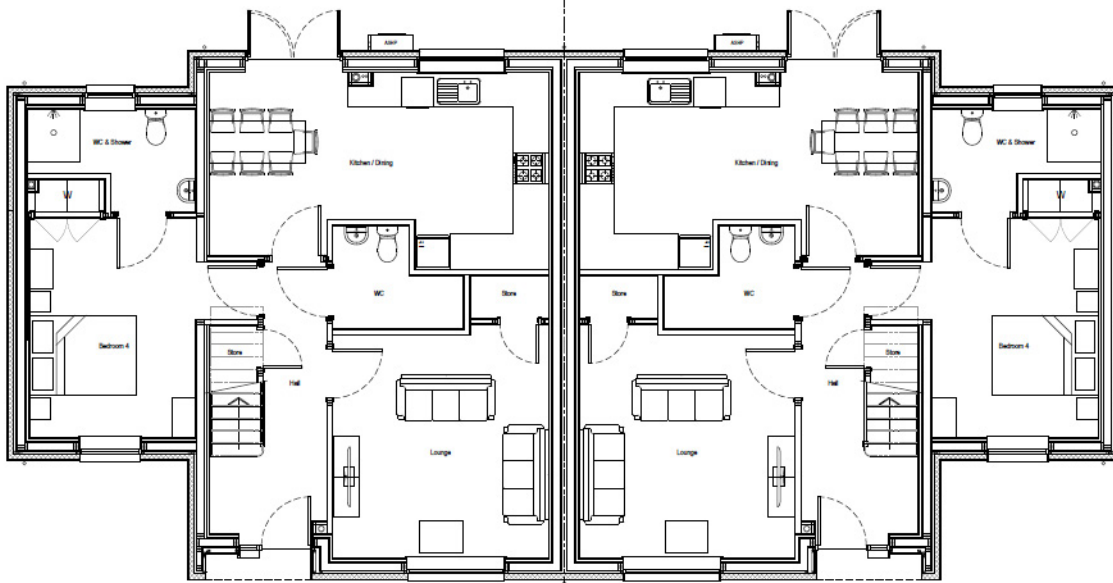
First Floor - Mid (OPP)

| First Floor | | |
|-------------|---------------|-----------|
| Room | Dimensions | Area |
| Bedroom 1 | 3.94m x 3.68m | 12.22 sqm |
| Bedroom 2 | 3.53m x 3.27m | 10.29 sqm |
| Bedroom 3 | 2.7m x 4.57m | 12.33 sqm |
| Bathroom | 2.34m x 1.97m | 4.35 sqm |

(Dimensions are approximate and should not be relied upon for ordering carpets or furniture, the above figures indicate the widest point only)

3 bedroom 6 person house

Fettercairn



Ground Floor - End (AS)

Ground Floor - End (OPP)

| Ground Floor | | |
|------------------|---------------|-----------|
| Room | Dimensions | Area |
| Livingroom | 4.03m x 4.17m | 17.14 sqm |
| Kitchen / Dining | 6.35m x 3.68m | 21.25 sqm |
| WC | 2.45m x 1.93m | 3.77 sqm |
| Bedroom 4 | 3.11m x 4.11m | 12.78 sqm |
| WC & Shower | 3.16m x 1.93m | 4.98 sqm |



First Floor - End (AS)

First Floor - End (OPP)

| First Floor | | |
|-------------|---------------|-----------|
| Room | Dimensions | Area |
| Bedroom 1 | 3.94m x 3.68m | 12.22 sqm |
| Bedroom 2 | 2.7m x 4.57m | 12.86 sqm |
| Bedroom 3 | 2.52m x 3.27m | 10.29 sqm |
| Bathroom | 2.28m x 1.97m | 4.49 sqm |

(Dimensions are approximate and should not be relied upon for ordering carpets or furniture, the above figures indicate the widest point only)

4 bedroom 8 person house



EILDON HOUSING ASSOCIATION – HOW TO CONTACT US

We welcome your feedback – there are many ways to let us know what you think.



The Weaving Shed, Etrick Mill,
Dunsdale Road, Selkirk TD7 5EB



www.eildon.org.uk



03000 200 217



www.facebook.com/EildonHousing



enquiries@eildon.org.uk



Follow us on Twitter – @EildonHousing

Co-operative & Community Benefit Societies Act 1757R(S). A Scottish Charity
SC015026.

Registered with Scottish Housing Regulator HEP107.



INVESTORS IN PEOPLE™
We invest in people Gold

