



Teviot Court Hawick



Page 1 - Living in Hawick

Page 2 - What is Supported Housing

Page 3 - About Teviot Court

Page 4 - Accommodation Information

Page 5 - Ground Floor Accommodation

Page 6 - First Floor Accommodation

Page 7 - Second Floor Accommodation

Page 8 - Third Floor Accommodation

Page 9 - Fourth Floor Accommodation

Page 10 - Teviot Activities

Page 11 to 13 - Charges

Page 14 - How to Apply

Page 15 to 19 - FAQ's

Contents

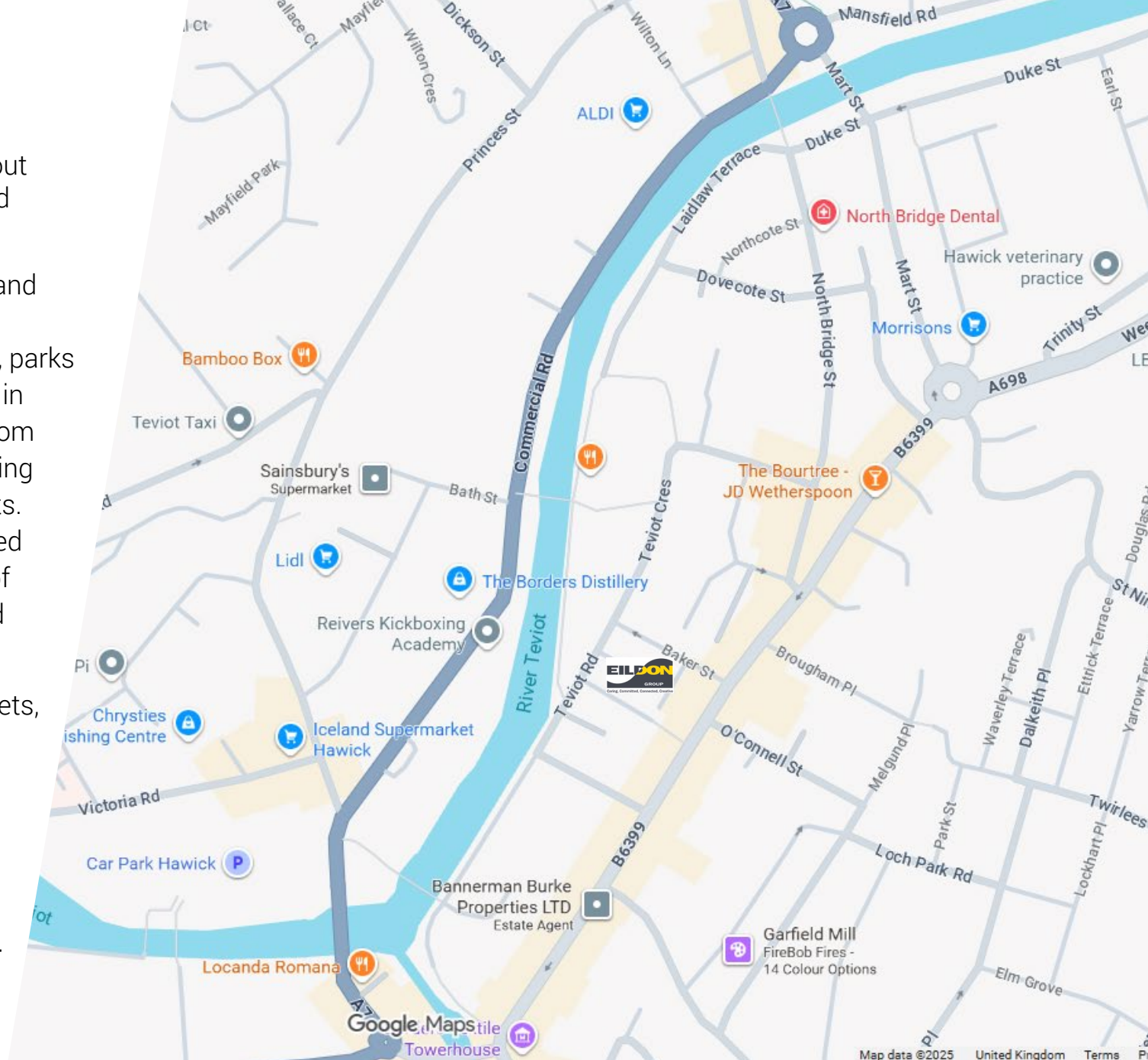
Hawick

We are delighted to share information about Teviot Court, one of Eildons two supported housing locations in Hawick.

Hawick is one of the larger Border towns and internationally famous for its high-quality knitwear. The town has several museums, parks and heritage sites. Teviot Court is located in the heart of the town, a few steps away from the high street and other retail areas offering a selection of shops, cafés and restaurants. Nearby is Wilton Lodge Park on the wooded banks of the River Teviot with 107 acres of riverside and tree-lined walks and a walled garden.

The town is well provided with supermarkets, GP surgeries and community facilities. Hawick offers a variety of activities, benefitting from a swimming pool, rugby, football and bowling clubs.

Overall, it offers a fabulous range of amenities to tenants living in Teviot Court.



Supported Housing provides high quality and accessible accommodation within a safe and secure setting. Our dedicated staff team provide a service tailored to your needs.

The housing support is offered by our on-site staff. We cover a wide range of services to help you maintain your independence, meet your responsibilities and assist you to enjoy a high quality of life.

The support includes regular visits to establish general health and wellbeing as well as advising and signposting on availability of more specialised and non-specialised support. We also help you in engaging with individuals, professionals and other bodies with an interest in your welfare.

Our supported housing developments have a communal lounge for you to use and we also run regular social events.

We have fabulous well maintained gardens where you can socialise and potter in. And in all our supported housing developments, pets are welcome to live there too!



1 - 44 Teviot Court, Teviot Crescent, Hawick, TD9 9RB

There are 44 one-bedroom self-contained flats over five floors, with a lift providing access to the upper floors.

All flats have electric central heating.

Teviot Court has a warm, friendly atmosphere which provides a secure setting for older people who want to live independently in the community, with the reassurance and support from on site housing support staff.

Our onsite team provide a Housing Support service from 9am until 5pm, Monday - Friday and 9am until 11am over the weekend.

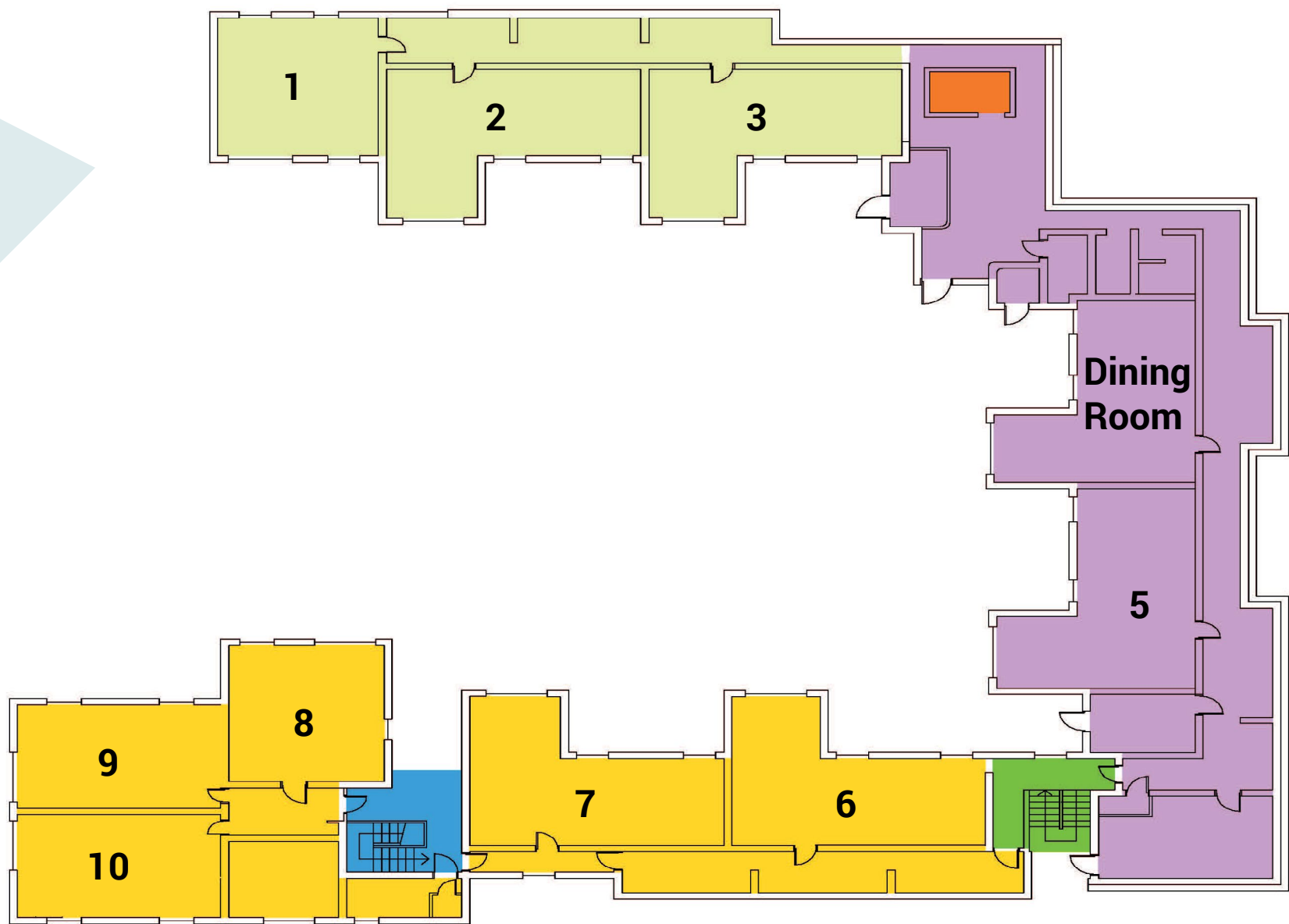




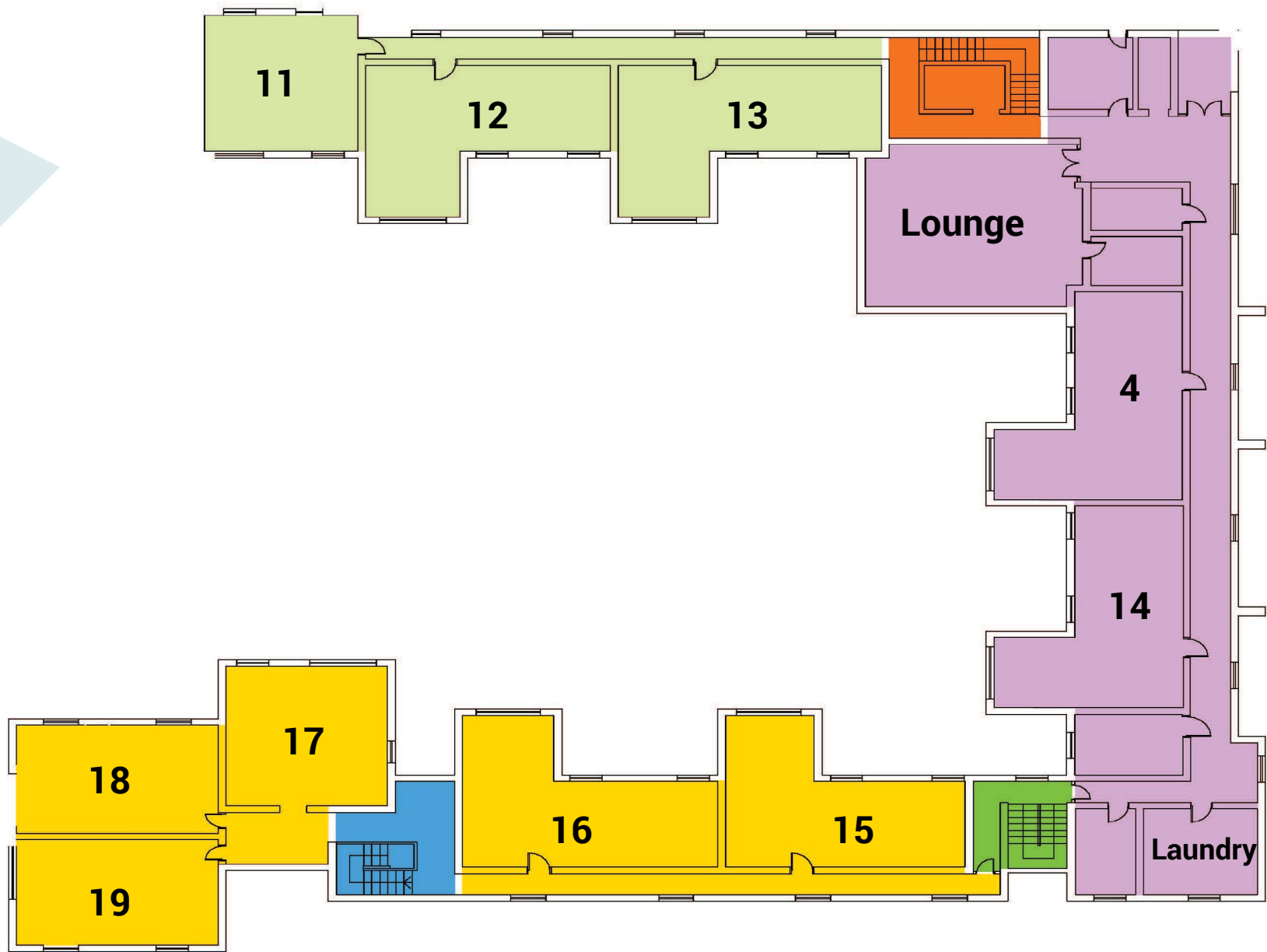
Each self-contained flat comprises

- access via your own front door
- a living room
- bathroom with walk in shower
- 1 bedroom
- access to a limited scooter store onsite

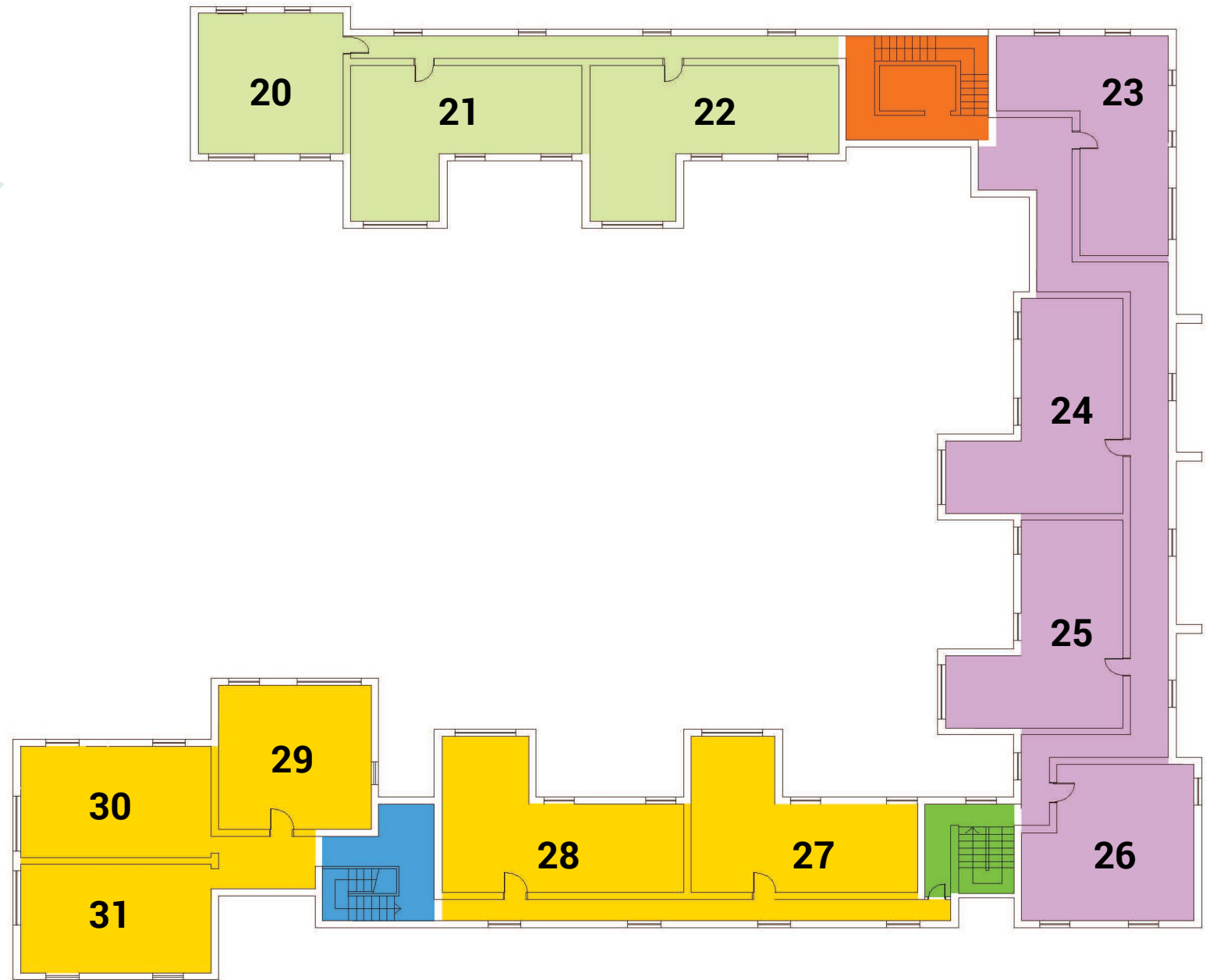




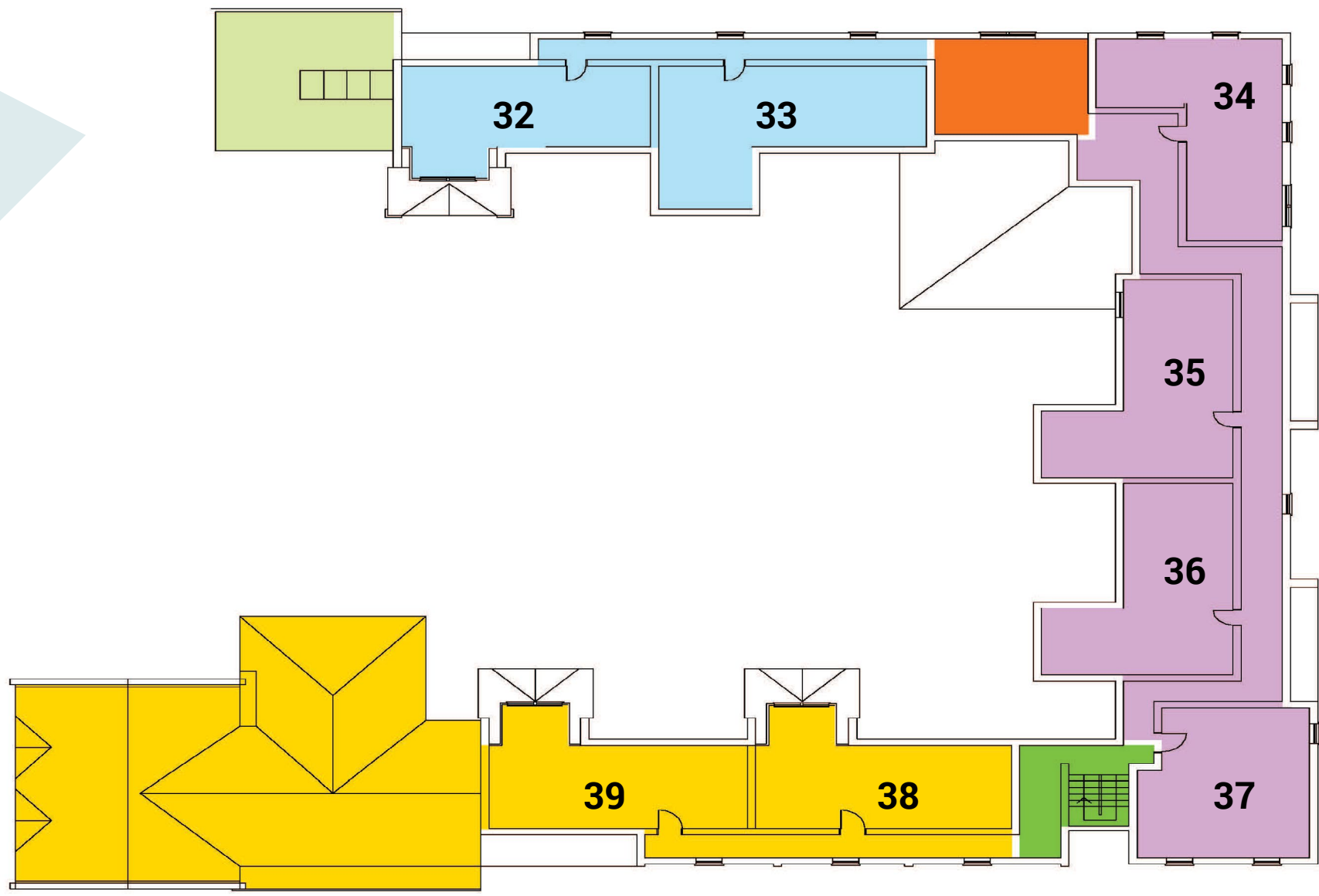
Ground Floor Accommodation



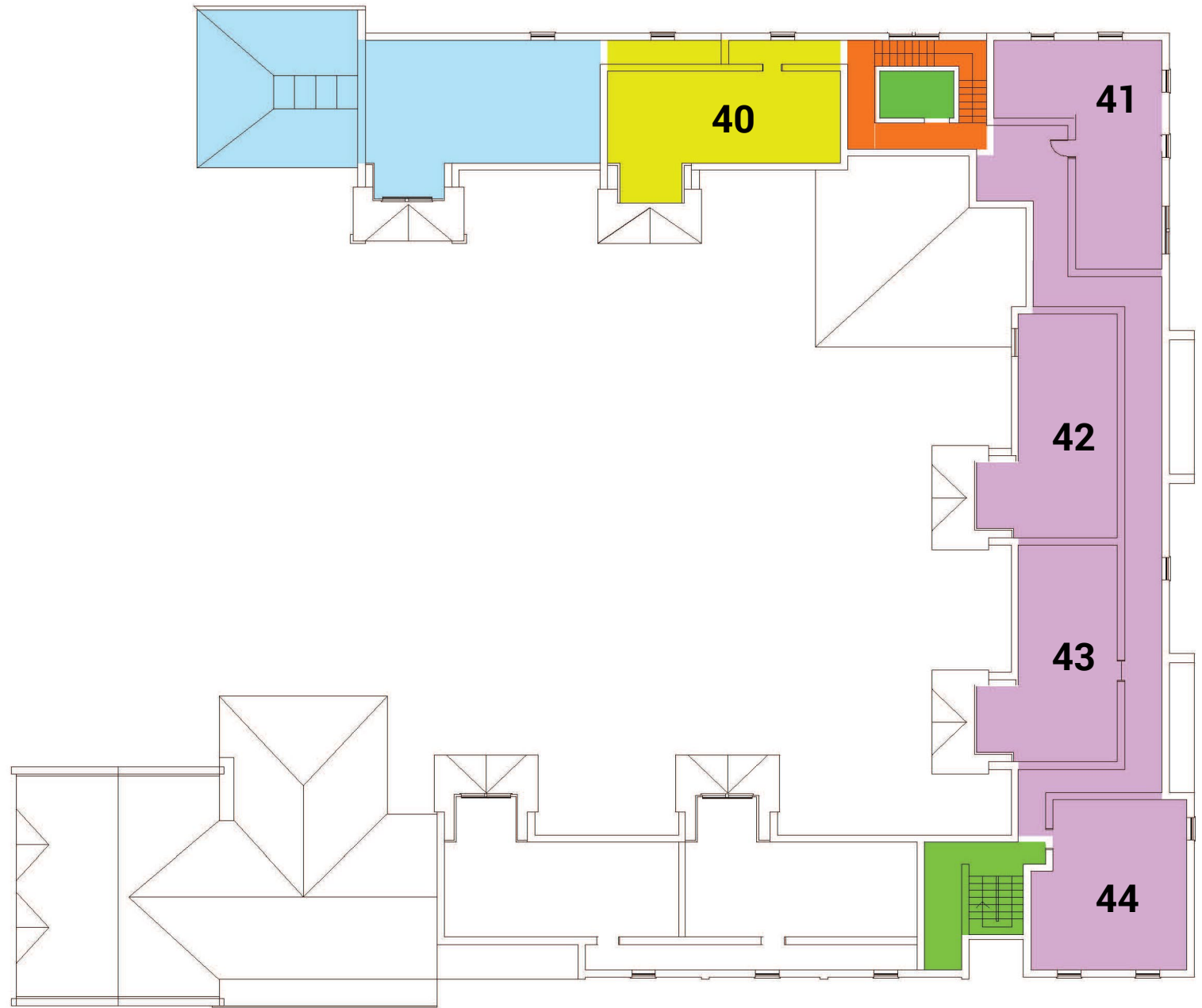
First Floor Accommodation



Second Floor Accommodation



Third Floor Accommodation



Fourth Floor Accommodation

Our OPAL (Older People Active Lives Service) is delivered in house making the social activity groups accessible to all in the community. The free-to-attend sessions have a variety of activities from gentle chair exercises, quizzes, games, guest speakers, arts and crafts and music. As well as the social activity groups we have men only specific groups.



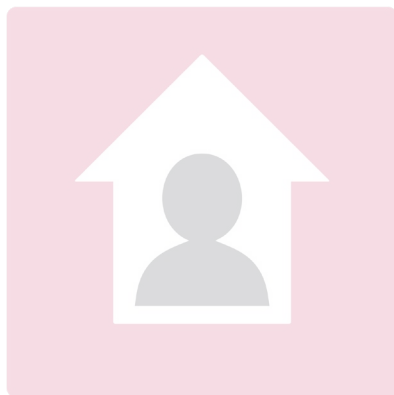
Our charges at Teviot Court

We charge a rent and service charge for each property.

The service charge includes:

- The cost of the heating and hot water within communal areas and your flat.
- Safety and security systems within the building including the alarm call system
- Grounds maintenance; upkeep and maintenance of the building

The cost of the general electric supply within each flat is the responsibility of the tenant.





Our charges:

The charges from April 2026:

- 1 bedroom flat: Rent + service charge = approx £714.69 to £752.89 per month

Housing Benefit

Entitlement to housing benefit will be based on a financial assessment on your ability to pay which will be carried out by Scottish Borders Council. If you are assessed as being entitled to housing benefit, the rent and some of the service charge is eligible for housing benefit.

Our charges are reviewed annually with any increases taking effect from 1 April each year.

Council tax and utilities are tenants' responsibility.

Council Tax Bands for the flats are as follows:

- 1 bedroom flat – Council Tax Band A

Care Charges

We have been contracted by Scottish Borders Council to provide the housing support service within Teviot Court.

You may be eligible to pay Scottish Borders Council a contribution towards these costs of £12.45 per week.

However, if you are entitled to housing benefit, regardless of the amount, you will not be eligible to pay the weekly Housing Support charge to Scottish Borders Council.

The charge is tenancy related and applies per property, and is for the duration of the tenancy regardless of occupancy. If the property is being occupied by a couple, the charge applied per property rather than per person.





You or your representatives can access more information on Teviot Court from our website, www.eildon.org.uk.

To apply for Teviot Court then please visit: www.eildonhomes.org.uk and complete our online registration form.

You can also receive assistance to complete the form if this is easier by contacting allocations@eildon.org.uk.

When completing the online registration form you will be given an opportunity to let us know about your current housing situation and why you would benefit from a move to our supported housing development. This may include letting us know about any health conditions you have which impact on your ability to manage in your current home.

We have collated some Frequently Asked Questions and our replies, which we hope you find helpful.

| Question | Answer |
|--|--|
| <p>Is the service only for older adults?</p> | <p>Yes, this service is predominately for adults over 60, however applications from those under 60 will be considered and may be accepted in certain circumstances . If you apply as a couple, at least one of you must be over 60 years of age.</p> <p>Teviot Court has a warm, friendly atmosphere, and provides a secure setting for older people who want to live independently in the community, with the reassurance and help from on site housing support staff during the day as required.</p> |
| <p>How do I know if I'm eligible?</p> | <p>Teviot Court is suitable for older people who would benefit from the housing support provided by staff on site during the daytime, and the alarm system connected to a 24-hour alarm centre.</p> |
| <p>What about support throughout the night?</p> | <p>If you are assessed by Scottish Borders Council as requiring support overnight, this will be provided by external support services.</p> <p>All flats are fitted with an alarm system which is connected to a 24hr alarm centre overnight for emergency response e.g. medical emergency/fire alert.</p> |
| <p>What features are there within the flats</p> | <p>All flats have level access shower rooms, fitted kitchen units with space for a free-standing fridge freezer and cooker.</p> |

| Question | Answer |
|--|--|
| Can I view a flat before I make my mind up? | Yes, you will need to view the property before you formally accept the offer of a tenancy at Teviot Court. A viewing of the flat and development will be arranged when you are offered a provisional allocation and when it is safe for you to do so. |
| What about gardens and the outside space? | <p>There is a small patio area at the main entrance with seating for tenants to enjoy.</p> <p>Teviot Court is situated near to the Teviot water which has accessible pathways for walkers to enjoy.</p> |
| What else does Teviot Court have to offer? | <p>We have a communal lounge and separate dining room.</p> <p>There are tea/coffee making facilities in the lounge area for tenants use.</p> <p>There is a mobility scooter store with space for approximately four scooters, this would be dependent on the size of each scooter.</p> |
| Are meals provided on site? | <p>We purchase meals locally which are delivered cooked and ready to serve Monday -Friday, for those tenants wishing to partake.</p> <p>The meals are charged separately and would be billed to you monthly. You can enjoy your meals in the communal dining area at lunch times.</p> |

| Question | Answer |
|----------------------------------|---|
| Is there a laundry? | Yes, the laundry room is on the first floor, where we have 3 washing machines and 3 tumble driers for your use on a scheduled basis. |
| What about Wi-Fi? | <p>Yes, Wi-fi is available throughout the building and within individual flats. Due to the contract arrangements we have in place, we charge for this service whether you use it or not. This is included in the rent charge.</p> <p>Our broadband access supports you to carry out online activities e.g. emailing, video calling and browsing the internet. You can continue to use your existing provider if this is your preference, or if your usage requires a higher broadband demand e.g. streaming Netflix or similar services, online gaming.</p> |
| Will I need a TV license? | <p>Yes, please transfer your current TV license to your new address. After you move, we will support you to transfer your current TV licensing arrangements to our concessionary license and to process any refund you may be eligible for on your existing license.</p> <p>The concessionary license covers all tenancies within the development and is free of charge for those over 75 years. For those under 75 years an annual fee of £7.50 is charged.</p> |
| What about car parking? | There is disabled parking at the front of the development and parking for tenants and visitors. |

| Question | Answer |
|---|--|
| Is there a guest room flat within the development? | Yes, there are two guests room on site, a double and a single that can be booked in advance. The rooms are reasonably charged on a per night basis. |
| Can I have a pet? | Yes, you are able to have a pet, as long as the arrangements comply with our Estate Management Policy section 4.9 . You must seek permission from us and complete a pet permission form, which includes details of contingency arrangements for your pet should you be unable to take care of it e.g. if you are unwell or need to go into hospital. |
| How does the alarm call system work? | <p>Each flat has a pull cord which can be activated to alert staff on site. Tenants will also be supplied with a pendant alarm to use in emergencies.</p> <p>The alarm call system also incorporates movement sensors which can be used to help with your safety if required.</p> <p>Additional sensors e.g. falls detectors, door sensors, can be added to the alarm call system if required.</p> |
| How do you ensure the development is safe? | The health and safety of our tenants, visitors and staff is of paramount importance to us. Teviot Court has been designed to the highest current standards and we have systems in place to ensure all equipment is regularly serviced and tested, all staff are suitably trained, and users of the building are protected at all times. In addition we work with the local police, the fire and rescue service, and Scottish Borders Council to continually enhance the safety of the development. |

| Question | Answer |
|--|---|
| <p>How is the staff team made up?</p> | <p>Our staff will be on duty between 9am – 5pm Monday – Friday and 9am – 11am at weekends.</p> <p>The staff team comprising Co-ordinator, 3 Asst Co-ordinators, 3 Scheme Assistants operate over both of our supported housing locations in Hawick. We also have a small relief team who cover shifts when required.</p> <p>Information will be available daily via our electronic notice board on who is on duty, and how staff can be contacted.</p> |
| <p>Can support staff help me with my housework e.g. laundry and cleaning my flat?</p> | <p>The housing support service does not include the provision of housework and cleaning, tenants are individually responsible for these tasks. Our staff can help you make necessary arrangements to employ individuals providing these services as required.</p> |
| <p>How can I be confident I will receive an excellent service?</p> | <p>The service at Teviot Court is registered with the Care Inspectorate to provide a housing support service. Regular inspections will take place to ensure the service delivery meets the standards required. Staff also monitor the quality of our service and encourage feedback from yourselves and your family. In addition, Let's Talk consultation meetings involving our Care Service Managers are held regularly throughout the year to give the opportunity for feedback and suggestions.</p> |
| <p>Can someone with dementia apply?</p> | <p>Yes, and our staff are experienced and trained in how to deliver personalised housing support to people living with dementia. They will liaise with health professionals to further enhance this support where required.</p> |



We look forward to welcoming you to Teviot Court

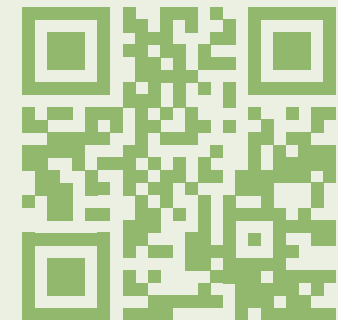


How to Contact Us

We welcome your feedback – there are many ways to let us know what you think.

-  The Weaving Shed, Ettrick Mill,
Dunsdale Road, Selkirk TD7 5EB
-  Customer Service: 03000 200 217
-  housing@eildon.org.uk

-  www.eildon.org.uk
-  EildonHousing
-  @eildonhousing



Co-operative & Community Benefit Societies Act 1757R(S).
A Scottish Charity SC015026.
Registered with Scottish Housing Regulator HEP107.

